

FJ Series Gas Solenoid Valves



This rugged design has been updated and improved to meet current and future qualifications. Its function is to control flow of gas upon a signal from the thermostat in gas applications. Both single (FJ) and dual (FJDO) models are available for a wide variety of applications.

These units have extruded aluminum bodies. Auxiliary outlets can be supplied for pressure taps or pilot if required. Multipoise, rigid mounting, and standard brackets are available.

Useful in a wide variety of applications.

Design Features

- Normally closed solenoid
- Not field serviceable
- Compact size with high flow rates
- Standard 0.25" NEMA terminals
- Inlet filtered, #80 mesh stainless steel screen
- Capacity defined as natural gas at 1000 BTU/cu. ft., 0.64 SP GR, at 1.0" WC pressure drop
- 100,000 cycles of operation
- Gas: natural, manufactured, mixed, LP, and LP/air mixtures
- Terminal and mounting brackets available in positions 1, 2, 3, or 4

NOTE: Terminal and mounting brackets cannot be in same position.

Specifications

FJ Model

- Ambient temperature: -40°F (-40°C) to 275°F (135°C) maximum
- Capacity: 119,000 BTU/HR
- 24 VAC, 50/60 Hz, 0.56 Amp
120 VAC, 50/60 Hz, 0.13 Amp
- Maximum pressure: 0.5 PSI
- Agency Certification Numbers:
AGA/CGA File No. C2765005
British Gas plc EC Product
Identification No. C87AR60

FJU Model

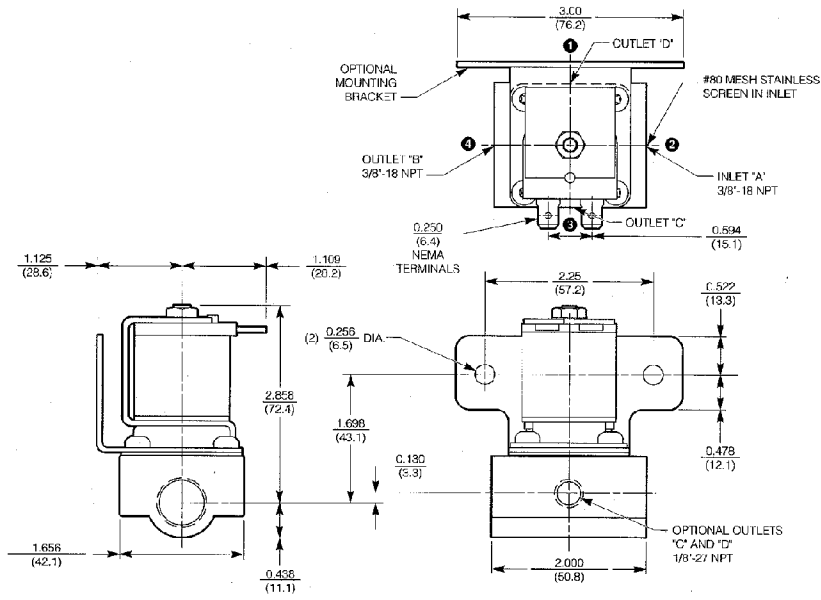
- Ambient temperature: -40°F (-40°C) to 160°F (71°C) maximum
- Capacity: 119,000 BTU/HR
- 24 VAC, 60 Hz, 0.57 Amp
- Maximum pressure: 0.5 PSI
- Agency Certification Numbers:
UL File No. MH16399
UL Guide No. YI022

FJDO Model

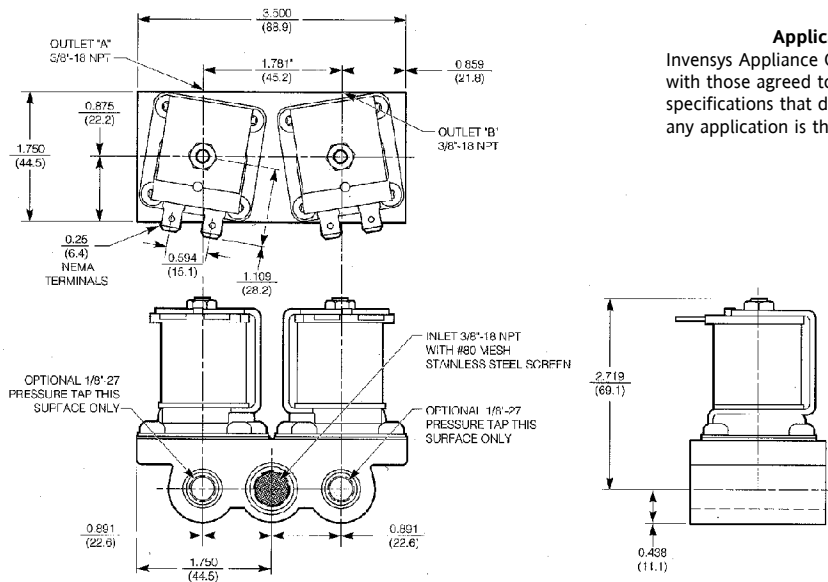
- Ambient temperature: -40°F (-40°C) to 275°F (135°C) maximum
- Capacity: 110,000 BTU/HR each outlet, 165,000 BTU/HR total with both sides open
- 24 VAC, 50/60 Hz, 0.56 Amp (each coil)
120 VAC, 50/60 Hz, 0.13 Amp (each coil)
- Maximum pressure: 0.5 PSI
- Agency Certification Numbers:
AGA/CGA File No. C276505
British Gas plc EC Product
Identification No. C87AR60

$\frac{\text{in.}}{\text{(mm)}}$

Model FJ and FJU



Model FJDO



Application Responsibility
Invensys Appliance Controls, as a supplier, will comply with those agreed to drawing requirements and specifications that define this product. Suitability for any application is the responsibility of the purchaser.