

# NCCM...02 SERIES

## COMPACT DAMPER ACTUATOR MODULATING CONTROL



### NCCM...02 SERIES

NCCM series is a compact, low torque modulating control actuator designed for small air dampers in HVAC systems. It is commonly used for precise airflow control in Small Damper, By-pass Damper, Fabric Duct, VAV systems, Air Handling Unit etc.

Its compact design makes it ideal for tight spaces, ensuring reliable performance in small-scale ventilation and air distribution systems.

### PRODUCT FEATURE

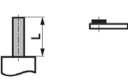
- Torque 2 Nm
- Damper size 0.4 m<sup>2</sup>
- Power supply AC/DC 24V
- Control modulating DC 0(2)...10 V
- Shaft dimensions - Ø 6...13 mm / □ 6/8/10mm\*
- Form fit 10 x 10mm - Produced to order (additional charge applies)
- Form fit 12 x 12mm - Produced to order
- Minimum shaft length 35 mm
- Adjustable angle of rotation
- Selectable direction of rotation
- Built-in manual override button
- The anti-rotation bracket is included in the scope of delivery.
- All our actuators come with built-in overload protection and automatically stop when the end stop is reached.

### MODEL SELECTION TABLE


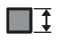
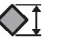
MODEL / TYPE	TORQUE	POWER SUPPLY	RUNNING TIME	AUXILIARY SWITCH
NCCM 1.2-02	2 Nm	AC/DC 24 V ± 10%	<50 sec	-

### DIMENSION (mm)

Shaft length

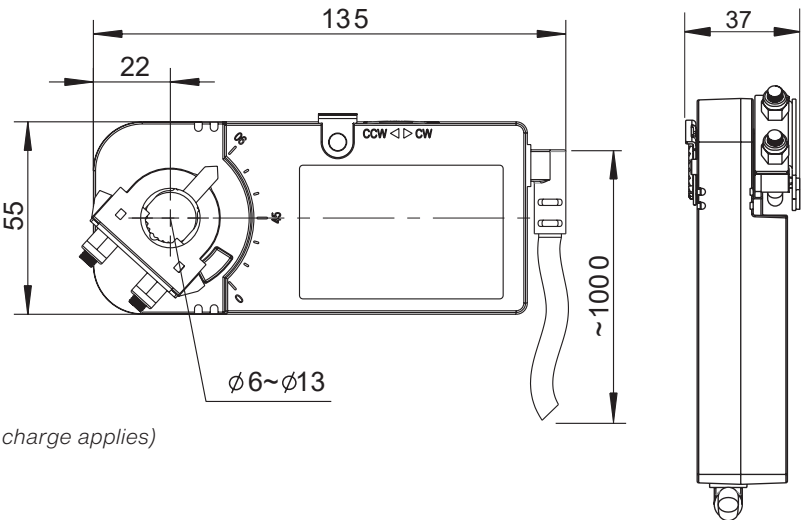
	Min. 35
---	---------

Clamping range


		
6...13	6/8/10	6...13

#### Remarks

Form fit 10 x 10mm - Produced to order (additional charge applies)  
Form fit 12 x 12mm - Produced to order



## TECHNICAL SPECIFICATION

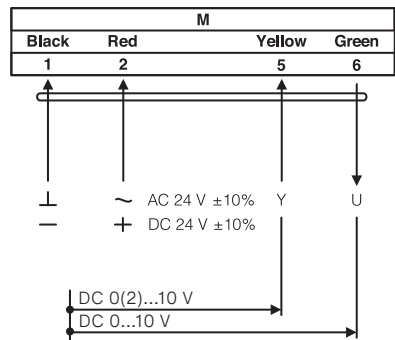
<b>MODEL NUMBER</b>	NCCM 1.2-02
<b>TORQUE</b>	2 Nm
<b>DAMPER SIZE</b>	0.4 m <sup>2</sup>
<b>SHAFT DIMENSION</b>	Ø 6...13 mm / □ 6/8/10mm*
<b>FORM FIT OPTIONS</b>	10 x 10mm - Produced to order (additional charge applies) 12 x 12mm - Produced to order
<b>POWER SUPPLY</b>	AC/DC 24 V ± 10%
<b>FREQUENCY</b>	50...60 Hz
<b>CONTROL SIGNAL (INPUT)</b>	DC 0(2)...10 V
<b>POSITION SIGNAL (OUTPUT)</b>	DC 0...10 V
<b>POWER CONSUMPTION</b>	
• OPERATING	4.0 W
• END POSITION	1.0 W
<b>FOR WIRE SIZING</b>	6.0 VA
<b>ELECTRICAL CONNECTION</b>	1 m Cable
<b>PROTECTION CLASS</b>	Class III 
<b>ANGLE OF ROTATION</b>	90° (95° mechanical)
<b>WEIGHT</b>	0.3 Kg
<b>LIFE CYCLE</b>	60,000 Rotation
<b>SOUND LEVEL</b>	40 dB
<b>IP PROTECTION</b>	IP54
<b>OPERATING TEMPERATURE</b>	-20°...50° as per IEC 721-3-3
<b>NON-OPERATING TEMPERATURE</b>	-30°...+60° C / IEC 721-3-2
<b>AMBIENT HUMIDITY</b>	0%...90% rH non condensing / EN
<b>MAINTENANCE</b>	Maintenance Free
<b>MODE OF OPERATION</b>	Type I / EN 60730-1
<b>EMC</b>	CE & ISO 9000 EN / EEC

\*Note that shaft dimension has a tolerance offset of ± 0.2mm.

# NCCM...02 SERIES

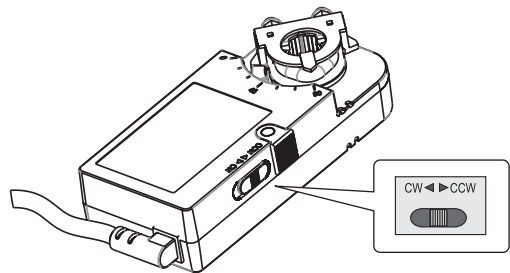
## COMPACT DAMPER ACTUATOR MODULATING CONTROL

### WIRING DIAGRAM NCCM...02 POWER SUPPLY AC/DC 24V

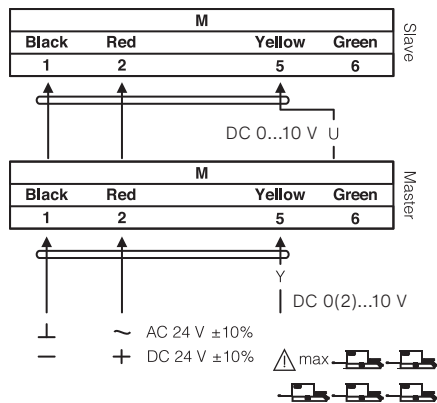


### DIRECTION OF ROTATION NCCM...02

Default factory setting: CW.  
Direction of rotation can be change by toggling between CW/CCW switch on the actuator's housing.



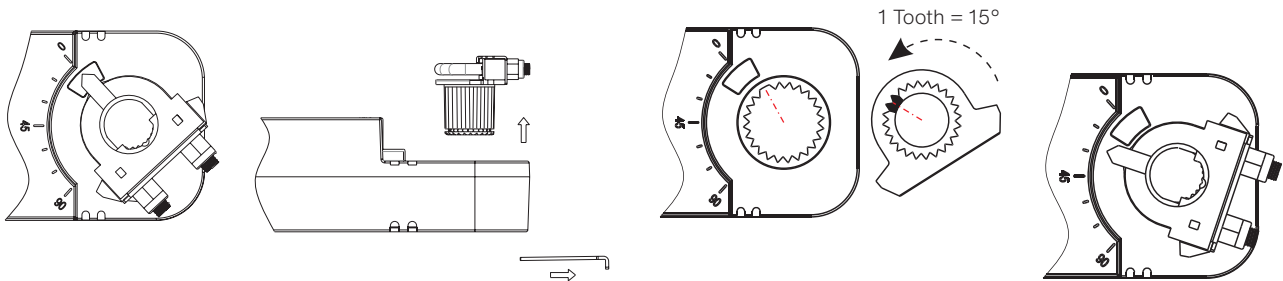
### WIRING DIAGRAM NCCM...02 PARALLEL CONNECTION



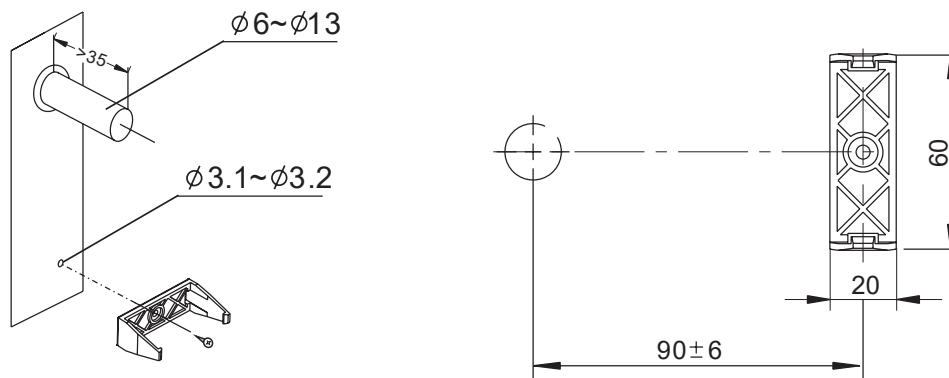
### REMARK

Parallel connection of NCCM...02 actuators are limited to 5. Power consumption must be observe.

## LIMITING ANGLE OF ROTATION NCCM...02



## INSTALLATION / MOUNTING INSTRUCTION



## IMPORTANT REMARK

For special requirement, consult your local Nenutec's representative.



This actuator includes electrical and electronic components and may not be disposed as household garbage. Please consider the local valid legislation.



AC / DC 24 V: Connect via safety isolating transformer.  
AC 230 V: To isolate from the main power supply, the system must incorporate a device which disconnects the phase conductor (with at least a 3mm contact gap.)

The performance specifications are nominal and conform to acceptable industry standards. NENUTEC shall not be liable for damages resulting from misapplication or misuse of its products.

### Disclaimer:

While we strive for accuracy, product specifications may change without notice. Images are for illustration only. Contact our sales team for the latest information.