


Eclipse ImmersoPak

Burners

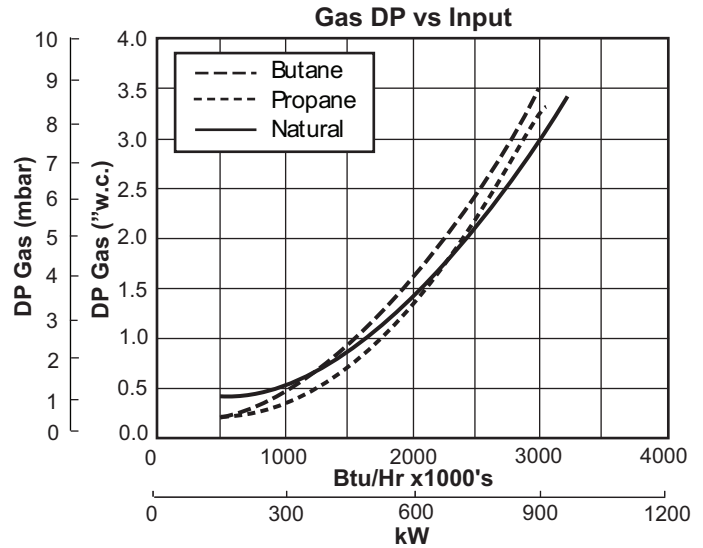
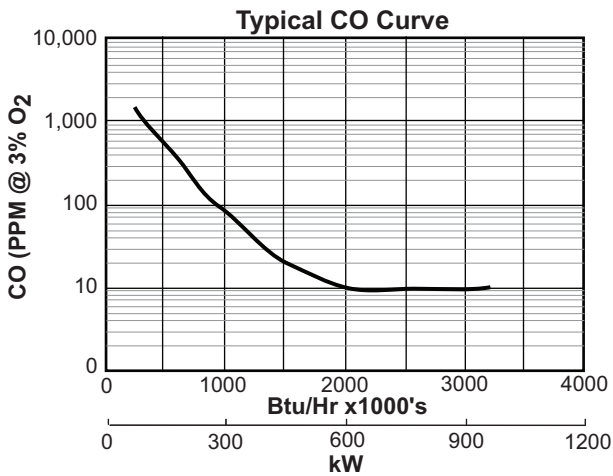
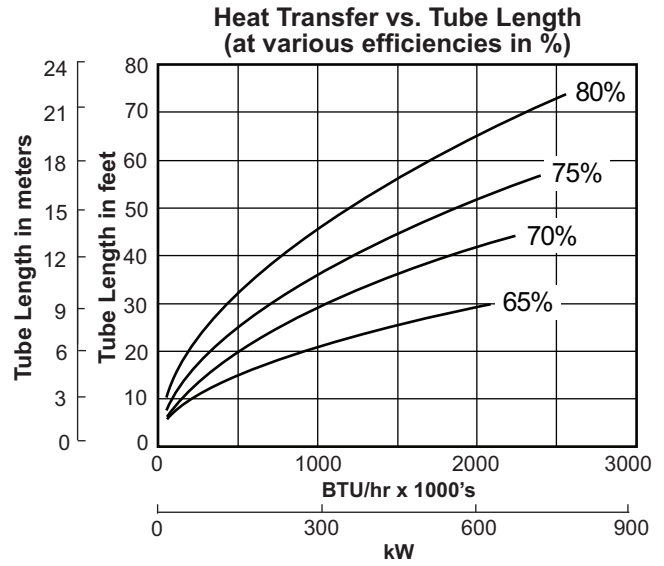
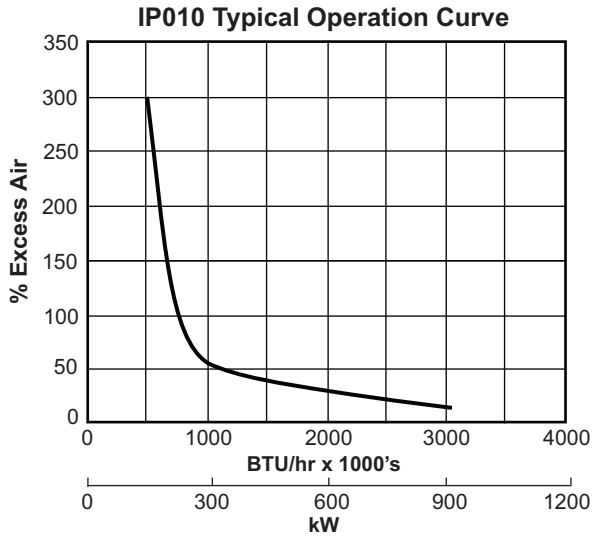
Series IP010

Version 2

Parameter	Modulating Air (Control Option 2)		
	Natural Gas	Propane	Butane
High Fire kBtu/hr (kW) @ 3% O ₂	3200 (938)	3050 (894)	3000 (879)
Low Fire kBtu/hr (kW)	200 (59)	200 (59)	200 (59)
High Fire CO (ppm) @ 3% O ₂	< 10	< 10	< 10
Orifice Size (mm)	30.0	25.0	22.5
Air Pressure "w.c. (mbar) @ Maximum Input <i>Air pressure at burner inlet (Tap "A")</i>	3.4 (8.5)		
Main Gas Pressure "w.c. (mbar)	Maximum	138.5 (345.0)	
	Minimum	15 (37.4)	
	Recommended	18 (44.8)	
Weight - less actuator lbs (kg)	164 (74)		
Blower Type	10" Packaged		
Gas Piping	NPT or BSP		
Flame Detection	UV Scanner		
Approvals			

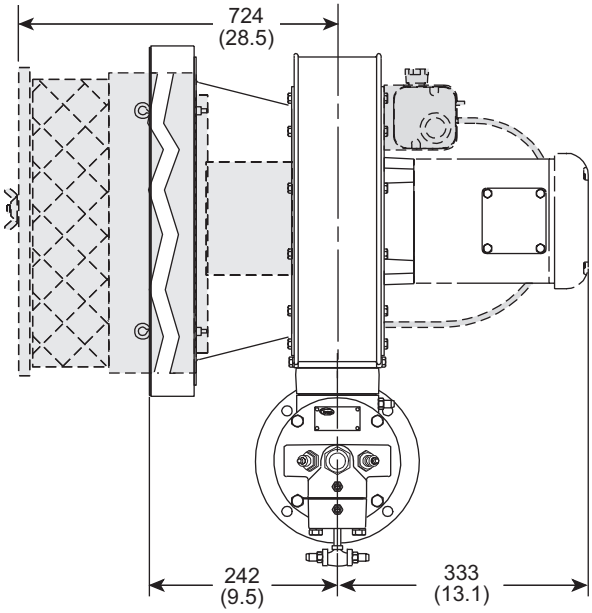
- All information is based on laboratory testing with a 12" diameter tube effective length of 50 feet. Different tube sizes and conditions (including back pressure) may affect the data.
- All information is based on standard tube design. Changes in the tube will alter performance and pressures.
- All inputs based upon gross calorific values.
- Plumbing of air and gas will affect accuracy of orifice readings. All information is based on generally acceptable air and gas piping practices.
- For 65% to 80% efficiency at high fire, tube length should be 30 to 75 feet long.
- Eclipse reserves the right to change the construction and/or configuration of our products at any time without being obliged to adjust earlier supplies accordingly.

Performance Curves

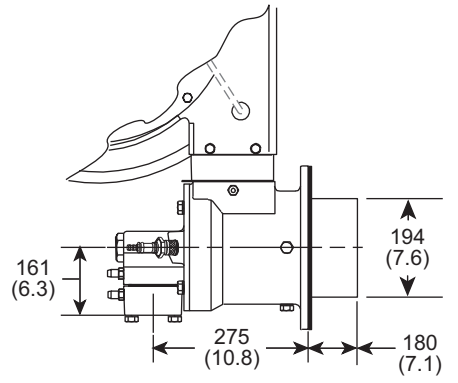
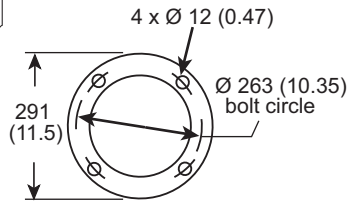
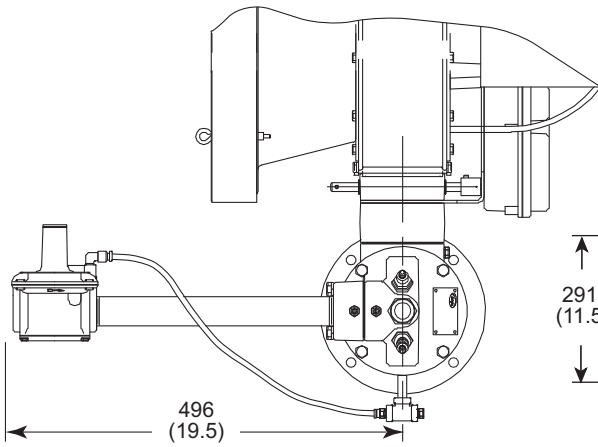
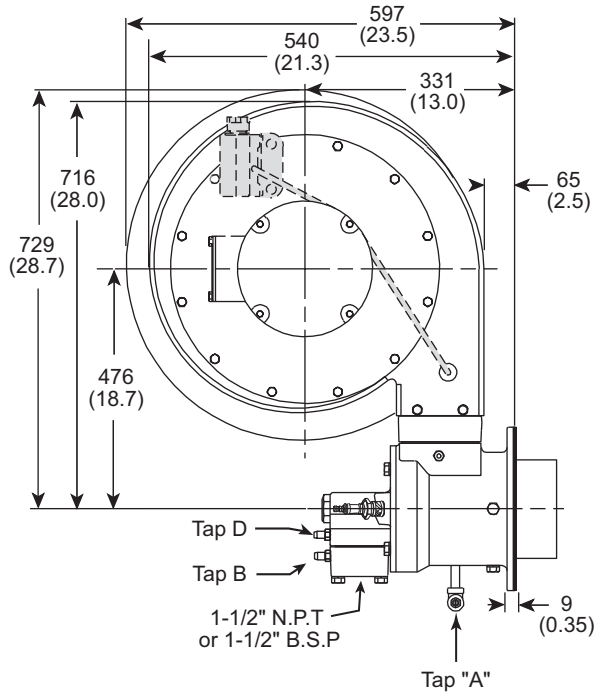


Dimensions & Specifications

Dimensions in mm (inches)



Optional Filter/Silencer and Pressure Switch shown in gray.



Orientation

Upright

Inverted

