


Eclipse ImmersoPak

Burners

Series IP004

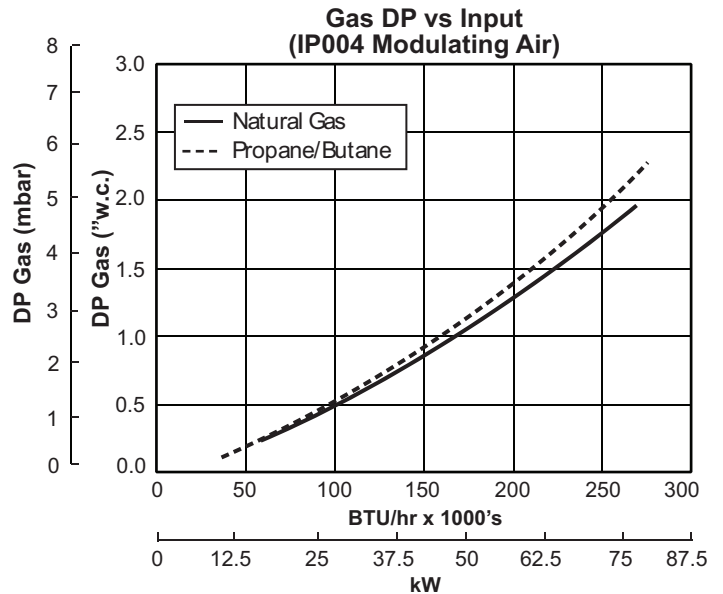
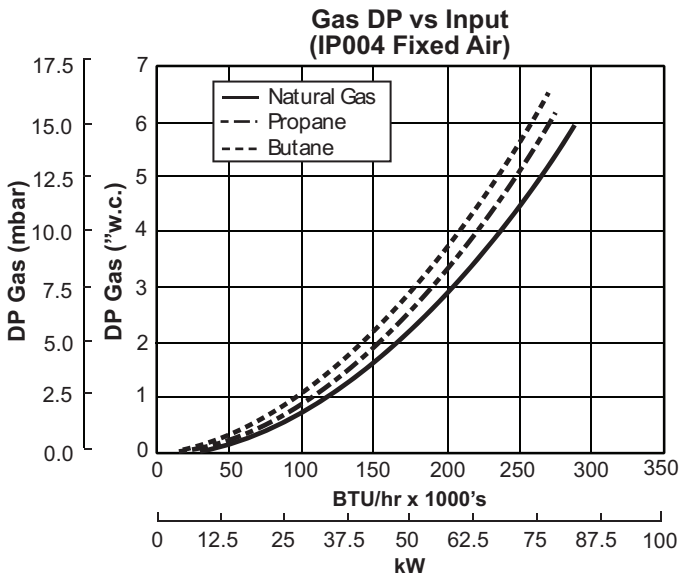
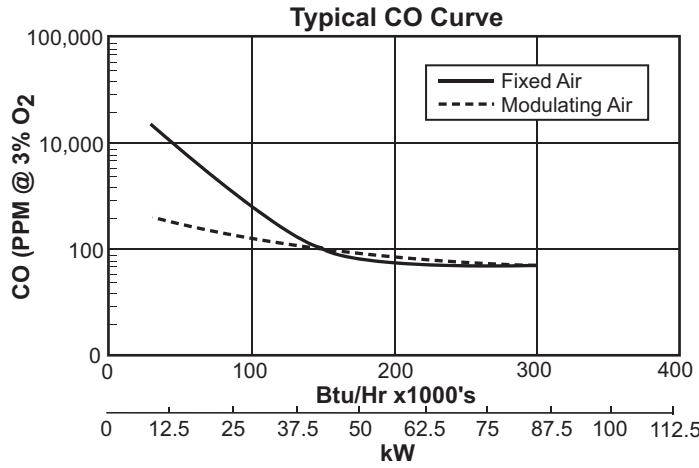
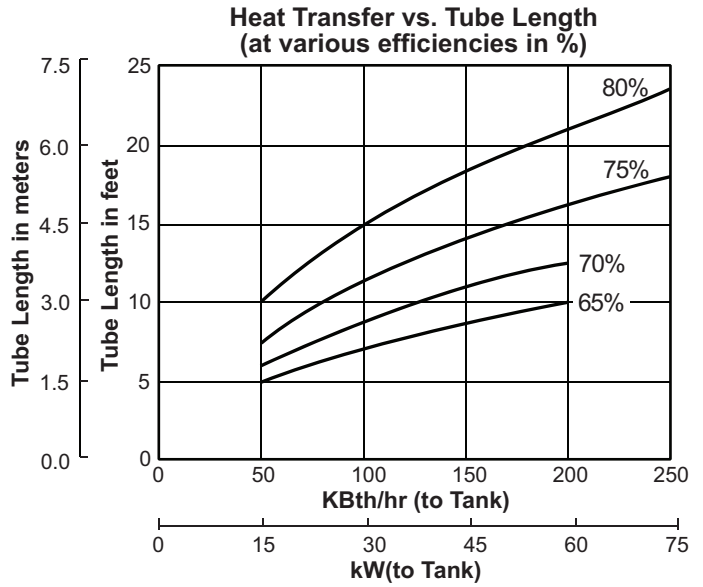
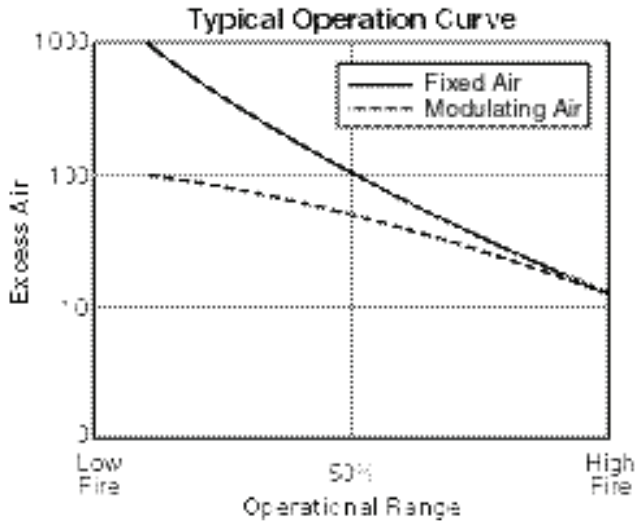
Version 2

Parameter	Fixed Air (Control Options 1, 3, 4)			Modulating Air (Control Option 2)		
	Natural Gas	Propane	Butane	Natural Gas	Propane	Butane
High Fire kBtu/hr (kW) @ 3% O ₂	290 (85)	275 (80)	270 (79)	270 (79)	275 (80)	275 (80)
Low Fire kBtu/hr (kW)	30 (9)	20 (6)	20 (6)	60 (18)	40 (12)	30 (9)
High Fire CO (ppm) @ 3% O ₂	< 50	< 50	< 50	< 50	< 50	< 50
Orifice Size (mm)	7.9	6.4	5.8	10.0	7.9	7.6
Air Pressure "w.c. (mbar) @ Maximum Input Air pressure at burner inlet (Tap "A")	7 (17.4)			3 (7.5)		
Main Gas Pressure "w.c. (mbar)	Maximum	27.7 (69.0)		27.7 (69.0)		
	Minimum	12 (29.9)		12 (29.9)		
	Recommended	15 (37.4)		10 (24.9)		
Tube Back Pressure "w.c. (mbar)	0.4 (1.0)			0.65 (1.6)		
Weight - less actuator lbs (kg)	68 (31)					
Blower Type	6" Packaged					
Gas Piping	NPT or BSP*					
Flame Detection	Flamerod or UV Scanner					
Approvals						

* BSP is interface connection only.

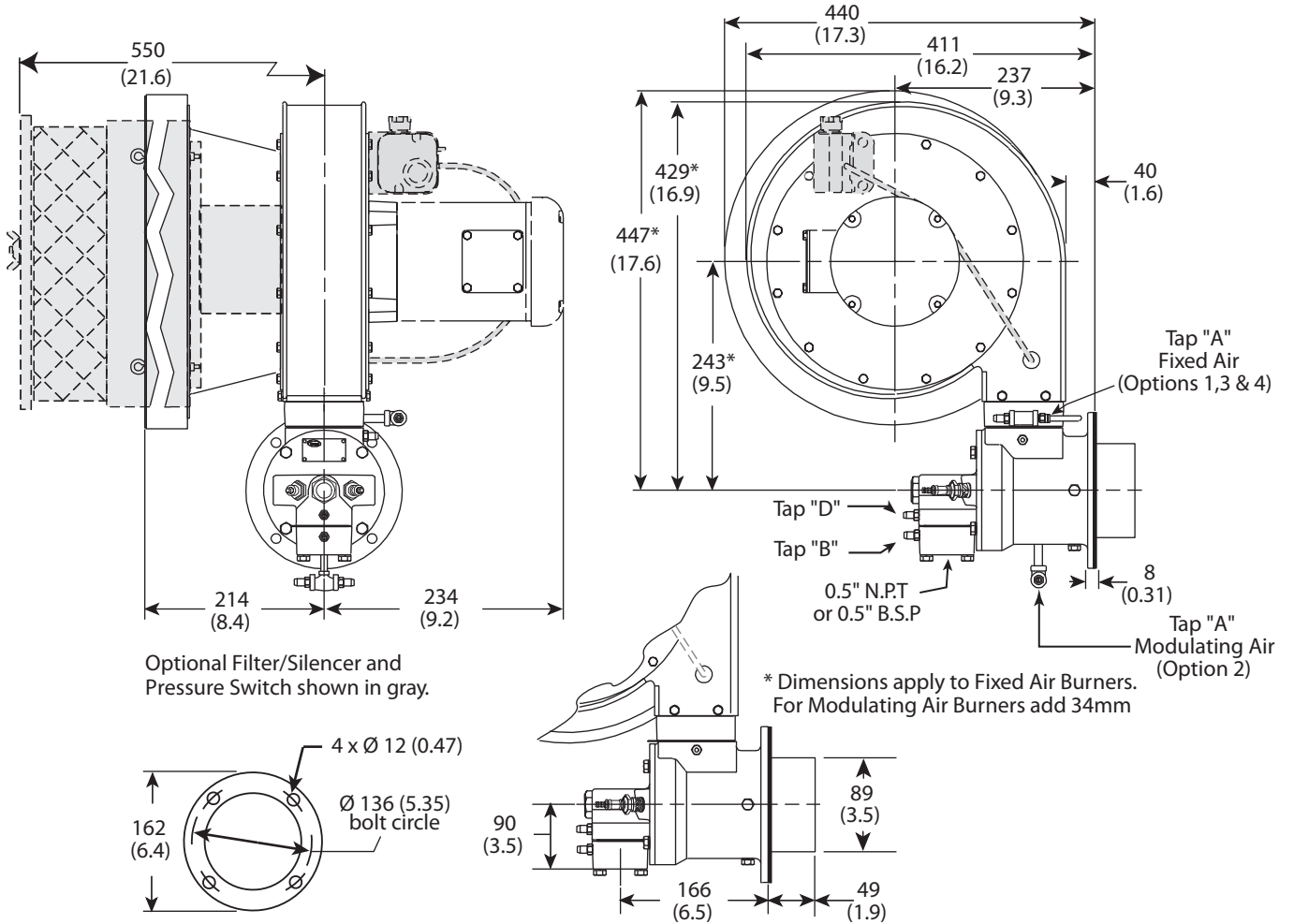
- All information is based on laboratory testing with a tube effective length of 32 feet. Different tube sizes and conditions (including back pressure) may affect the data.
- All information is based on standard tube design. Changes in the tube will alter performance and pressures.
- All inputs based upon gross calorific values.
- Plumbing of air and gas will affect accuracy of orifice readings. All information is based on generally acceptable air and gas piping practices.
- For 65% to 80% efficiency at high fire, tube length should be 10 to 23.5 feet long.
- Eclipse reserves the right to change the construction and/or configuration of our products at any time without being obliged to adjust earlier supplies accordingly.

Performance Curves

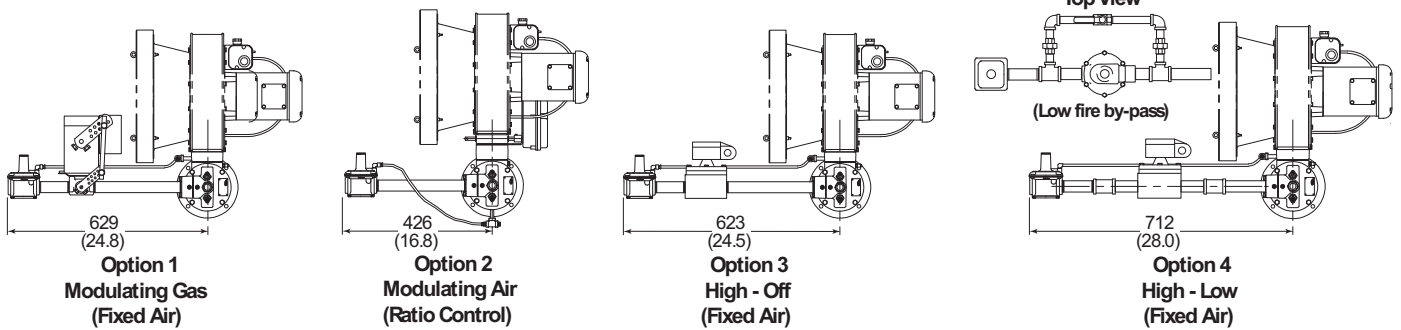


Dimensions & Specifications

Dimensions in mm (inches)



Control Options



Orientation

